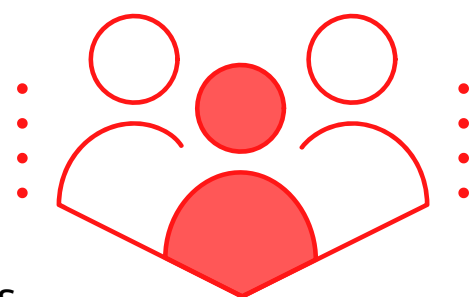


# TIPS FOR RECRUITING PEOPLE WITH INTELLECTUAL AND DEVELOPMENTAL DISABILITIES FOR RESEARCH

## WHERE DO I RECRUIT?

- Your community (libraries, YMCA, places to worship)
- Advocacy organizations (Board for People with Developmental Disabilities, Autism Speaks, and National Down Syndrome Society)
- Special Olympics office or events
- School and educational programs
- Community supported services (day programs and group homes)



## WHAT ARE BARRIERS TO PARTICIPATION FOR PEOPLE WITH IDD?

- Unclear communication
  - Research communication often has too much jargon and is not in plain language
- Transportation
- Reading challenges
- Lack of education or knowledge of the project
- Lack of awareness of ongoing research opportunities



## HOW CAN I BUILD RELATIONSHIPS?

- Introduce yourself. Personal interactions are important!
- Get involved in community organizations that work with people with IDD in your community
- Build connections with organization members
- Set aside time to connect with community members (community leaders and self-advocates)
- Follow up and make a personal connection
- Be transparent and open for exchanged ideas



## WHAT INFORMATION DO I PROVIDE?

- Clear research expectations and project information:
  - Description
  - Duration
  - Location
  - Types of data that will be collected
- Who can and cannot participate (inclusion and exclusion)
- Stipends for participation
- Transportation information
- Contact information



### CONTACT US:

**WEBSITE:** [AUSDERAU.WAISMAN.WISC.EDU/HRET](http://AUSDERAU.WAISMAN.WISC.EDU/HRET) **EMAIL:** [AUSDERAULAB@EDUCATION.WISC.EDU](mailto:AUSDERAULAB@EDUCATION.WISC.EDU)

This infographic was funded through a Patient-Centered Outcomes Research Institute (PCORI) Eugene Washington PCORI Engagement Award (EA #10029).